

Linea
Gourmet

essential
pharma diet

Contains: 240 grs.
5 servings of 48 grs.

WHITE CHOCOLATE BALLS

LA49



DENOMINATION:

White chocolate balls with sweetener.

INGREDIENTS:

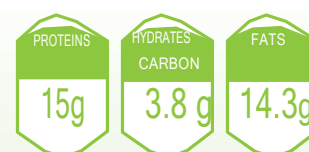
Cocoa butter, vegetable fiber, hydrolyzed collagen, **butter** powder (butter, malto-dextrin, milk protein, emulsifier (E471)), **milk** protein, coloring agent (dioxide titanium (E171) [nano]), emulsifier (**soy** lecithin (E322), E476), sweeteners (sucralose (E955), acesulfame (E950), antioxidant (tocopherol), white chocolate balls (corn grits, **soy** protein, sugar, cocoa powder, inulin, salt) 8%, glazing agent (gum arabic (E414), shellac (E904)). The absolute risk of cross-contamination cannot be excluded.

STORAGE CONDITIONS:

Store in a cool, dry place.

HOW TO USE:

Ready to eat.



| | | For (in g) 100 | Per 1 serving 48g |
|--|------|-------------------|-------------------------|
| ENERGY VALUE | | | |
| Kj | Kj | 2000 | 960 |
| Kcal | Kcal | 479 | 230 |
| CALCULATED MEAN ANALYTICAL TO VALUE | | | |
| Fats | (g) | 29,8 | 14,3 |
| of which saturated | (g) | 18 | 8,6 |
| Carbohydrates | (g) | 8 | 3,8 |
| of which sugars | (g) | 4,3 | 2,1 |
| Fibres | (g) | 23,1 | 11,1 |
| Proteins | (g) | 31,2 | 15 |
| Salt | (mg) | 573,7 | 275,4 |

