

STRAWBERRY FLAVOR SHAKE and BISCUIT LE07



DENOMINATION

High protein shake with sweetener flavored with strawberry and biscuit.

INGREDIENTS

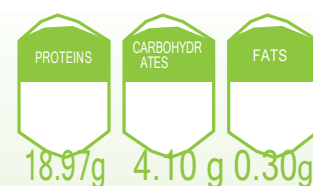
Whey protein concentrate (80%), strawberry flavouring, glycine, biscuit flavouring, polydextrose, xanthan gum (thickener), guar gum (thickener), beet red dye E-162, chocolate flavouring, sodium chloride, magnesium citrate (magnesium ion) and sucralose (sweetener). May contain traces of the following products and their derivatives: **dried, soy and egg.**

STORAGE CONDITIONS

Store in a dry and cool place.

HOW TO USE

Pour 200 ml. of cold water in a shaker. Add the contents of a dose and shake vigorously.



1 serving = 1 Scoop 1 Pot = 16 Servings	Net weight : 400 g
--	------------------------------

		For (in g)	Per 1 serving
		100	(25g)
Kcal	Kcal	380,57	95,14
KJ	KJ	1598,41	399,60

Fats	(g)	1,21	0,30
of which saturated fatty acids	(g)	0,17	0,04
Carbohydrates	(g)	16,40	4,10
of which sugars Fibres	(g)	13,63	3,41
Proteins	(g)	<0.10	<0.10
Salt	(g)	75,88	18,97
	(g)	0,63	0,16

This document **does** not contain **commercial** information. It contains only scientific information which **is** addressed exclusively **to** the doctor to whom it is addressed.

www.essentialdiet.es