

SHAKE OF BELGIAN CHOCOLATE

LE09



DENOMINATION

High protein food preparation flavored with Belgian chocolate.

INGREDIENTS

Concentrated milk protein, defatted cocoa, chocolate flavoring, hydrolyzed collagen protein, bulking agent (maltodextrin), glycine, sodium chloride, thickeners (guar gum and xanthan gum). Contains: soy.

STORAGE CONDITIONS

Store in a dry and cool place.

CONSERVATION

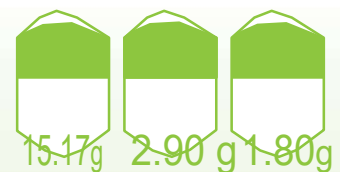
Best before: See date on bottom of the boat.

HOW TO USE

Pour 200 ml. of cold water into a shaker. Add the contents of a dose and shake vigorously. If desired, place 45 sec in the microwave and serve in a cup.

WARNINGS

This product should not be used as the sole food source, it should be included in a general diet protocol. Try to maintain sufficient daily fluid intake. Do not take in case of lactose intolerance.



1 serving = 3 Scoops
1 Pot = 16 Servings

Net weight :
400 g

		For (in g) 100	Per 1 serving (25 g)
Kcal	Kcal	253,50	63,37
KJ	KJ	1059,63	264,90
Fats	(g)	7,20	1,80
of which saturated fatty acids	(g)	0,53	0,13
Carbohydrates	(g)	11,60	2,90
of which sugars	(g)	8,20	2,05
Fibres	(g)	0,29	0,07
Proteins	(g)	60,70	15,17
Salt	(g)	2,00	0,50

commercial information. It contains only scientific information which is addressed exclusively to the doctor to whom it is addressed.

www.essentialdiet.es